

SOLID

SOLIDS particles are:



- very close together YES / NO
- in regular pattern YES / NO
- held by strong forces YES / NO
- can move freely YES / NO

EXAMPLES:

LIQUID

LIQUID particles are:



- very close together YES / NO
- in regular pattern YES / NO
- held by strong forces YES / NO
- can move freely YES / NO

EXAMPLES:

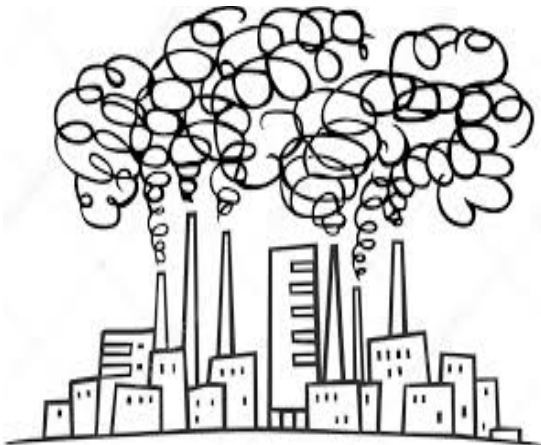
GAS

GAS particles are:



- very close together YES / NO
- in regular pattern YES / NO
- held by strong forces YES / NO
- can move freely YES / NO

EXAMPLES:



STATES OF MATTER

MATTER can take form of:

- SOLID
- LIQUID
- GAS



ICE

WATER

STEAM

is

is

is
