

Basic note values

WHOLE note



SEMIBREVE ta-a-a-a

4 beats

HALF note



MINIMA ta-a

2 beats

QUARTER note



SEMIMINIMA ta

1 beat

EIGHT note



CROMA ti

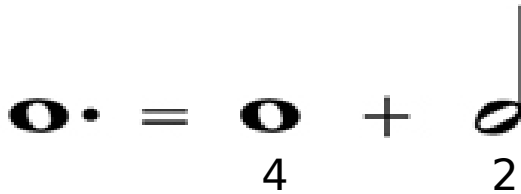
1/2 beat

Dotted notes

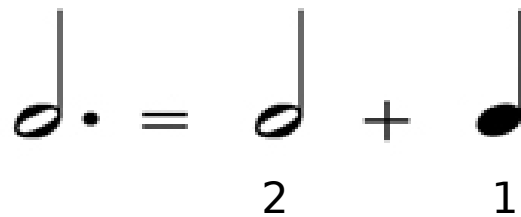


add half the value of the note

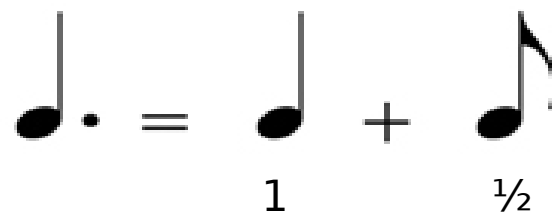
6 beats



3 beats



1 1/2 beats



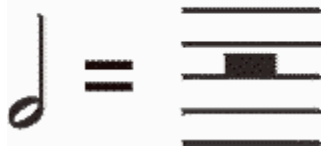
Basic rest values

WHOLE rest
4 beats



QUARTER rest
1 beat

HALF rest
2 beats



EIGHTH rest
1/2 beat

4/4

1 2 3+4 (shhhh!)

1 2+3 4 (shhhh!)



Music Math: Notes

INSTRUCTIONS: Use the correct note values to complete the simple math problems below.

$$\text{Quarter Note} + \text{Quarter Note} = \underline{\hspace{2cm}}$$

$$\text{Half Note} + \text{Quarter Note} = \underline{\hspace{2cm}}$$

$$\text{Quarter Note} + \text{Eighth Note} = \underline{\hspace{2cm}}$$

$$\text{Half Note} + \text{Eighth Note} = \underline{\hspace{2cm}}$$

$$\text{Quarter Note} + \text{Half Note} = \underline{\hspace{2cm}}$$

$$\text{Quarter Note} + \text{Dotted Quarter Note} = \underline{\hspace{2cm}}$$

$$\text{Beamed Quarter Notes} + \text{Quarter Note} = \underline{\hspace{2cm}}$$

$$\text{Quarter Note} + \text{Eighth Note} = \underline{\hspace{2cm}}$$

$$\text{Beamed Quarter Notes} + \text{Beamed Quarter Notes} = \underline{\hspace{2cm}}$$

$$\text{Dotted Quarter Note} + \text{Beamed Quarter Notes} = \underline{\hspace{2cm}}$$