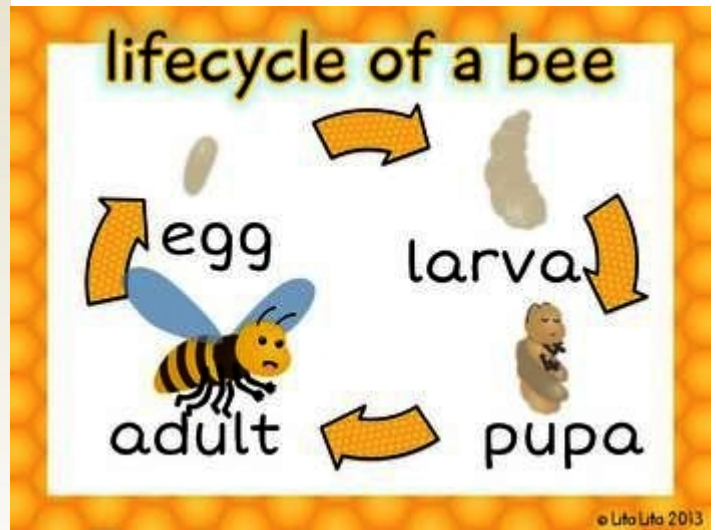
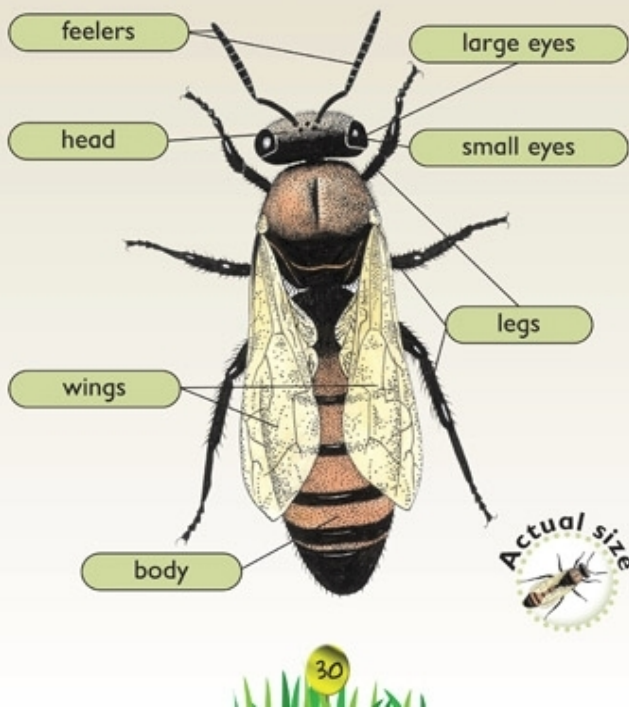


Bug Map



- Honey bee is an INSECT. Most common types of bees are **Honey bees**: they produce honey!
- Honey bees live as large colonies in **honeycomb** structures built from **beeswax** called **hives**.
- Honey is made from the **nectar** and sweet deposits that bees collect from plants and trees. Honey is stored in **honeycomb** as a food source for the colony.
- Bees have 5 eyes, 6 legs, 2 antennas, 2 pairs of wings.
- It has a sting (ouch!) to defend itself - but when it stings the bee dies!!
- Bees have a long proboscis (type of tongue) that helps them to get the nectar out of flowers, they collect **pollen** in pollen baskets on their body.
- Worker bees collect pollen and nectar to feed the colony, they clean the hive, make the honey, take care of the eggs and feed the queen. The queen lays up to 1,500 eggs a day.
- Bees survive the winter by eating honey and keeping warm with the other bees.



The Hive



The HONEYCOMB



Life Cycle of a Bee

Cut out the pictures. Paste them in order.

