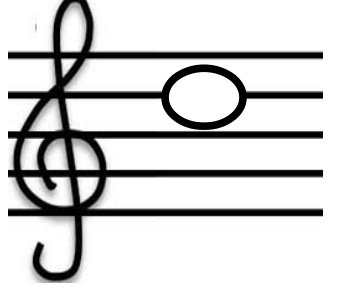
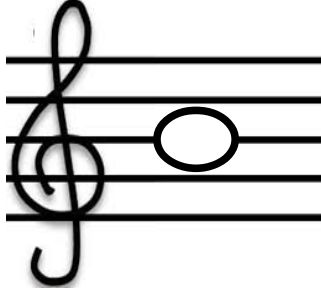
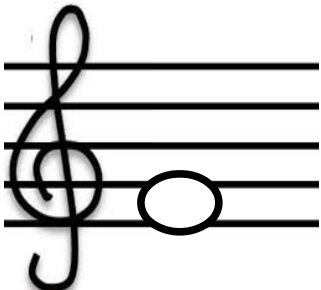
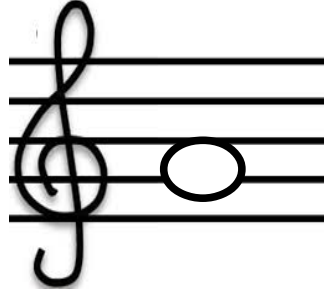
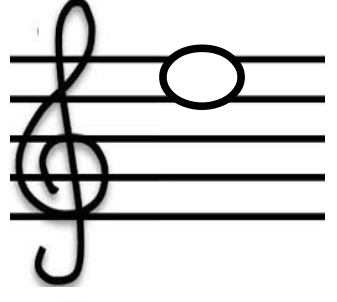
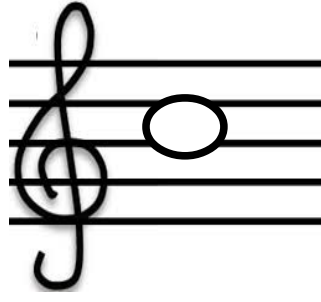
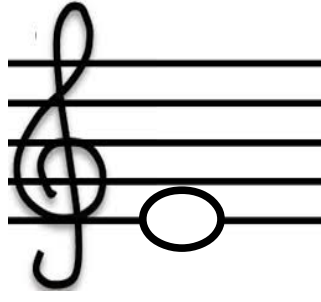
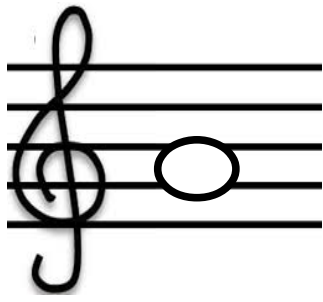


NAME the MUSIC NOTES:



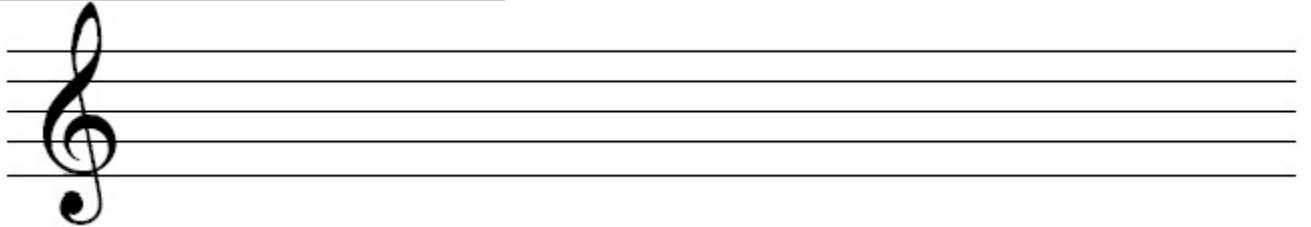
Colour **A** dark blue.
Colour **D** orange.

Colour **B** pink.
Colour **E** yellow.

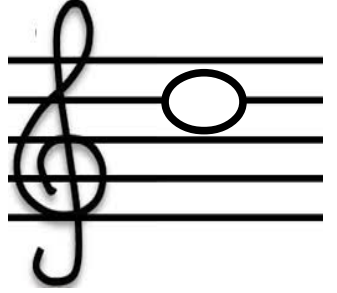
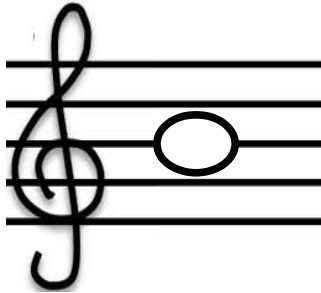
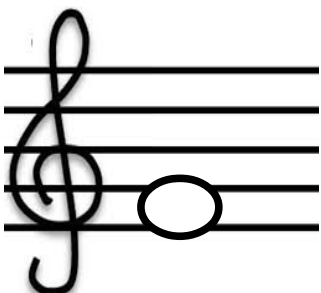
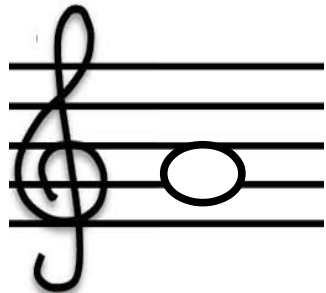
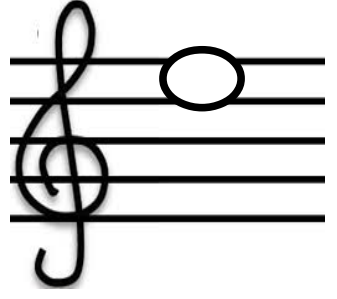
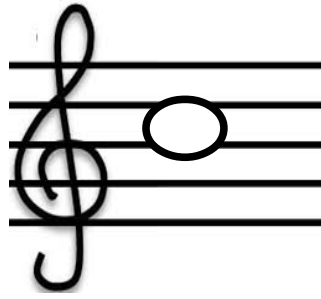
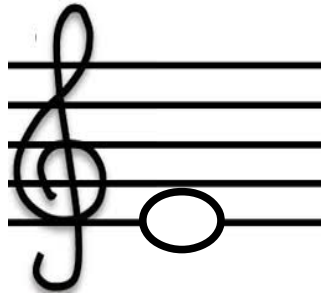
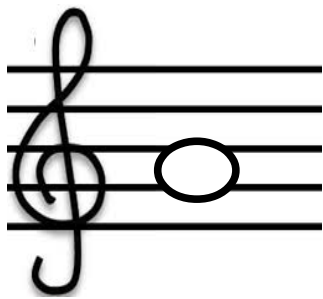
Colour **G** dark green.
Colour **F** light green.

Colour **C** red.

Draw a line of TREBLE CLEFS:



NAME the MUSIC NOTES:



Colour **A** dark blue.
Colour **D** orange.

Colour **B** pink.
Colour **E** yellow.

Colour **G** dark green.
Colour **F** light green.

Colour **C** red.

Draw a line of TREBLE CLEFS:

